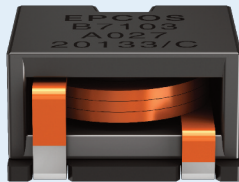


EPCOS Sample Kit 2020

ERU Chokes

ERU 27 Series – B82559B*A027



ERU Chokes – ERU 27 (SMD)

L (inductance) ±10%	μH	1.0	1.5	2.2	3.3
$I_{sat, typ} (+25\text{ °C})$	A	101.5	67.0	68.0	60.3
$R_{DC} (nom)$	mΩ	0.46	0.46	0.68	0.88
Height h_{max}	mm	12.3	12.3	13.9	15.3
Ordering code	B82559	B2102A027	B2152A027	B3222A027	B4332A027
L (inductance) ±10%	μH	4.7	6.8	10.0	15.0
$I_{sat, typ} (+25\text{ °C})$	A	53.5	44.0	34.8	22.9
$R_{DC} (nom)$	mΩ	1.39	1.66	1.92	1.92
Height h_{max}	mm	15.0	16.2	17.3	17.3
Ordering code	B82559	B5472A027	B6682A027	B7103A027	B7153A027

- All values measured at +25 °C ambient temperature
- $I_{sat, typ}$ is current that will result in an app. 20% drop in inductance values
- Operating temperature range: -40 °C ... +150 °C (component)
- Qualified to AEC-Q200
- RoHS compatible
- Tape and reel packing: 56 mm blister tape, 330 mm reel

Height of component h_{max}	Blister tape (H)	Packing unit per reel
12.3 mm	13.4 mm	100 pcs.
13.9 mm	15.0 mm	90 pcs.
15.3 mm	16.4 mm	80 pcs.
15.0 mm	16.4 mm	80 pcs.
16.2 mm	17.3 mm	75 pcs.
17.3 mm	18.4 mm	65 pcs.

